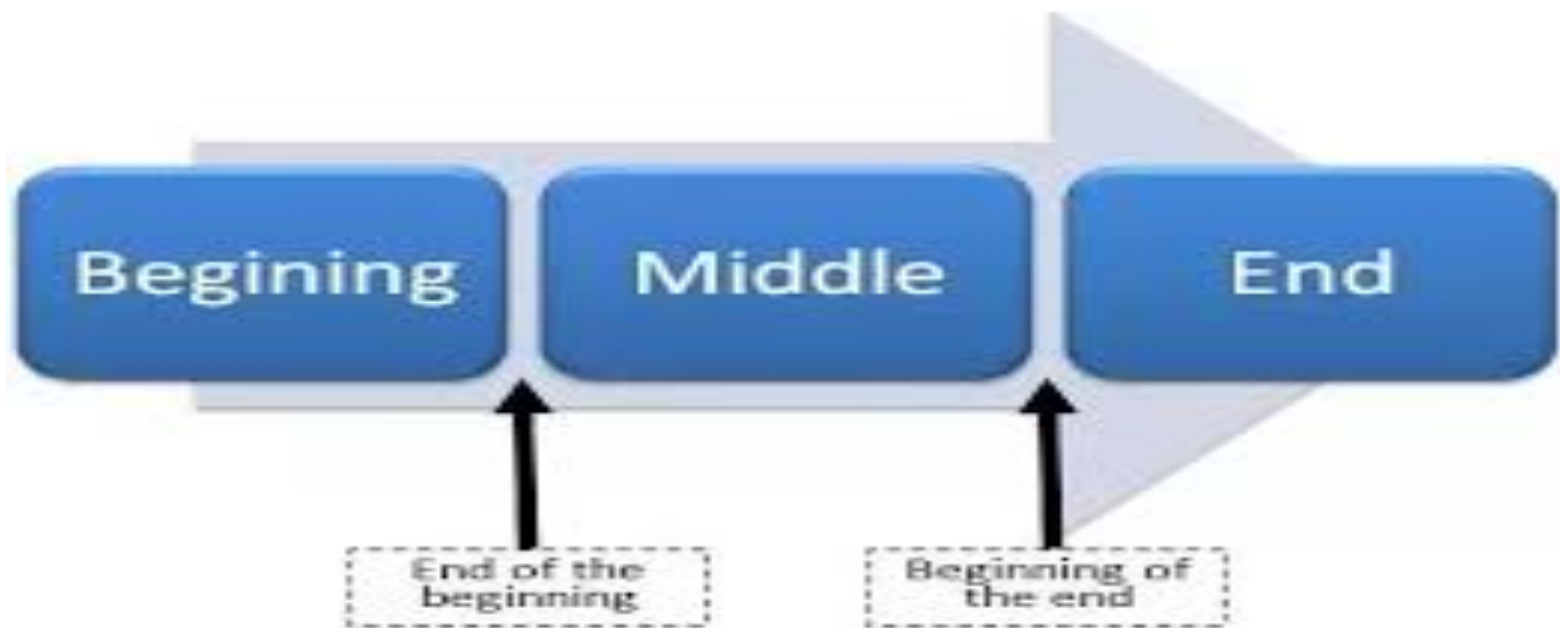


# **LESSONS LEARNED FROM THE COVID-19 PANDEMIC**

**Bruce Goldberg, MD  
Professor, OHSU-PSU School of Public Health  
OPHA – October 12, 2020**





The World Health Organization declared the COVID-19 outbreak a **pandemic** on March 11, 2020.

Dr Tedros Adhanom Ghebreyesus  
WHO DIRECTOR-GENERAL



**EXPLAINS**

# What is a pandemic?



**Epidemic - An outbreak of an illness. When there is a sudden increase in cases.**

**Pandemic –when that illness becomes prevalent over a whole country or the world.**





WORLD

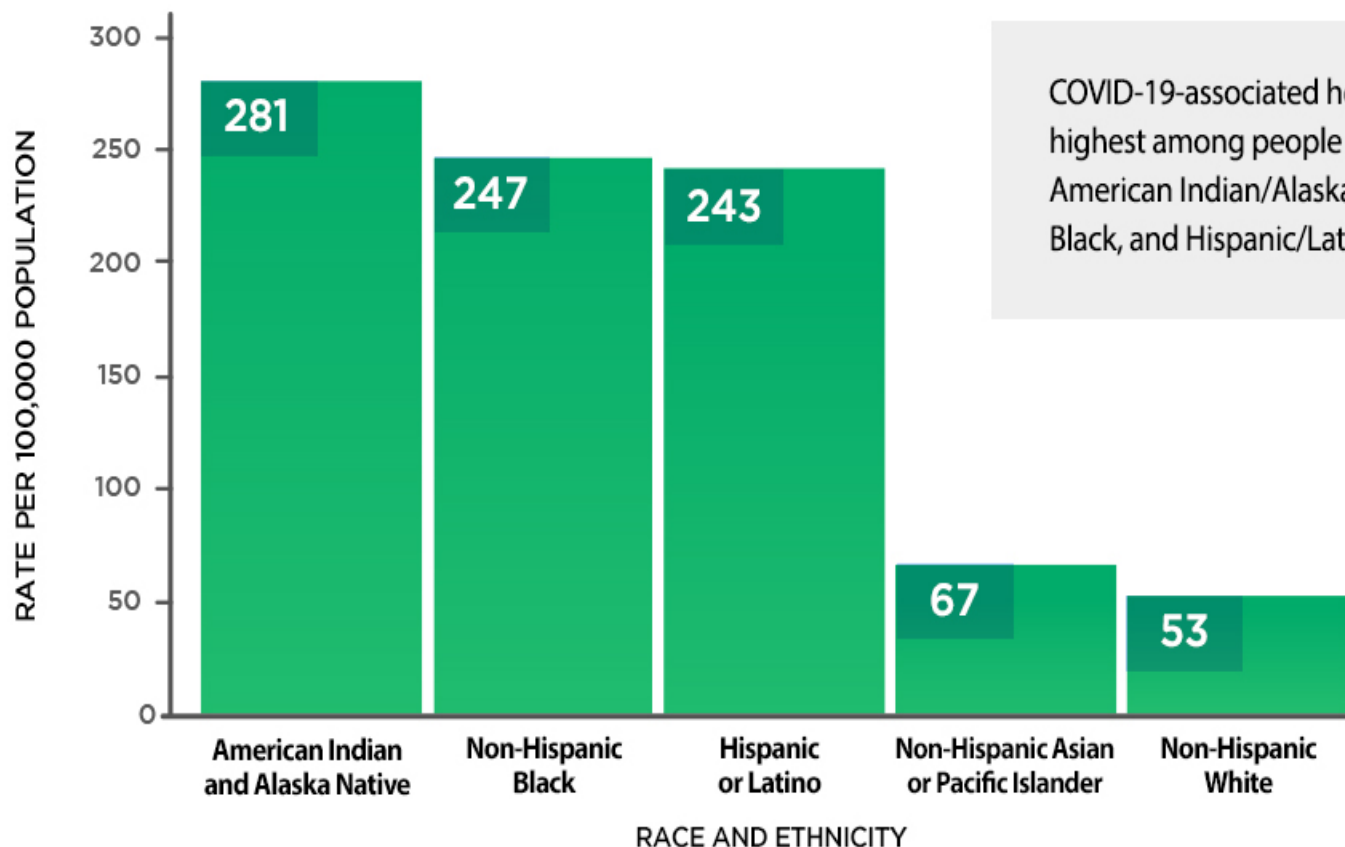
THE WORLD IS  
TEMPORARILY CLOSED

- **Health Care System**
- **Public Health System**
- **Ourselves**

RACISM IS A  
PANDEMIC

# Age-adjusted COVID-19-associated hospitalization rates by race and ethnicity

COVID-NET, MARCH 1 - JULY 18, 2020



COVID-19-associated hospitalization rates are highest among people who are non-Hispanic American Indian/Alaska Native, non-Hispanic Black, and Hispanic/Latino.

[cdc.gov/coronavirus](https://cdc.gov/coronavirus)



Rates are statistically adjusted to account for differences in age distributions within race/ethnicity strata in the COVID-NET catchment area. Rates are based on available race and ethnicity data which is now complete in 94.1% of cases from COVID-NET sites. COVID-19-associated hospitalization rates for American Indian and Alaska Natives may be impacted by recent outbreaks among specific communities within this population and the small numbers of American Indian and Alaska Natives cases included in COVID-NET.

CS317869-A



# The New York Times

## ***Millions Have Lost Health Insurance in Pandemic-Driven Recession***

A new study estimates that more than five million American workers lost their insurance this spring, a number higher than those in any full year of insurance losses.

July 13, 2020



# Medicaid Surge Due To COVID-19

Access to Care

JULY 2020

## *The coronavirus pandemic is causing a historic shift in Colorado's health care system.*

The loss of private insurance amid the current recession is estimated to result in 563,000 more people enrolling in Colorado's Medicaid program by December 2020 — what would be the largest single-year increase in the program's history.<sup>1</sup>

The anticipated surge could have implications for both new enrollees and the 1.3 million Coloradans who were enrolled in Medicaid prior to March 2020.<sup>2</sup>

Before the pandemic, many of Colorado's Medicaid enrollees already reported problems with the system: In 2019, 28% said that they did not get the health care they needed because they could not get timely appointments and 20% could not find a doctor who accepted their coverage.<sup>3</sup> The rapid addition of hundreds of thousands of

### Three Key Takeaways:

- Nearly one in three Coloradans are projected to be enrolled in Medicaid by December 2020, up from one in five in January.
- Medicaid members already experiencing barriers to accessing health care may face additional challenges when enrollment grows.
- Medicaid providers have mixed levels of confidence in their ability to serve the influx of enrollees.

new enrollees could further strain this already-taxed system.

But while some providers have concerns over a rise in demand for services, others are confident in the system's ability to deliver health care despite this historic growth in enrollment.

# **The New York Times**

***Two Friends in Texas Were Tested for Coronavirus. One Bill Was \$199. The Other? \$6,408.***

It's an example of the unpredictable way health prices can vary for patients who receive identical care.

By Sarah Kliff June 29, 2020

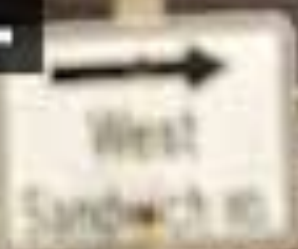
THE BALTIMORE SUN

**Doctors on edge as practice  
revenues plunge, survey finds**

John Murphy, *MDLinx* | April 17, 2020

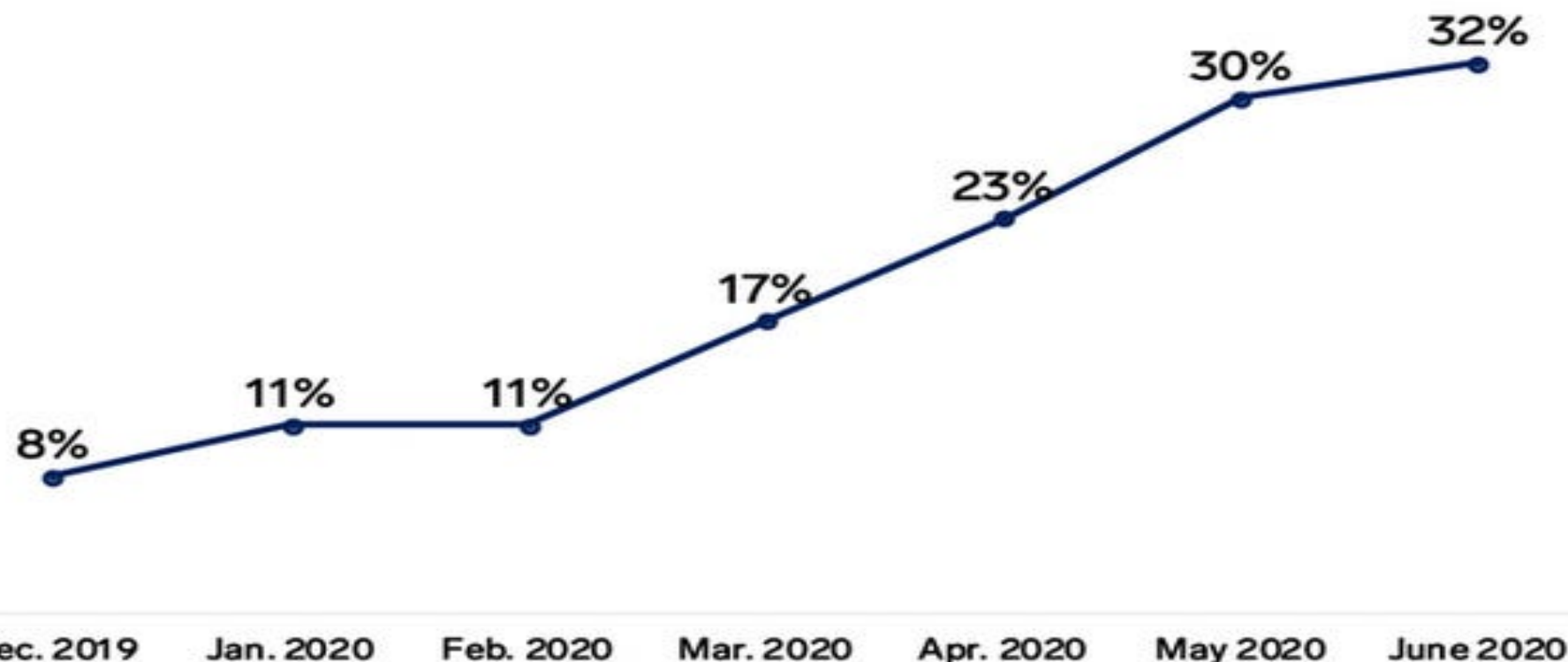


# **WILL CORONAVIRUS BANKRUPT RURAL HOSPITALS?**



# Telemedicine Adoption In The US Has Skyrocketed Amid The Coronavirus Pandemic

*Percentage of US adults who have used telemedicine*



*Source: CivicScience, June 2020*

*Methodology: CivicScience collected responses from 166,908 US adults from December 1, 2019 to June 24, 2020. Respondent pool is representative of the US population.*



**EL DORADO NURSING HOME HAS 21 COVID-19 CASES**  
15 PATIENTS, 6 STAFF MEMBERS AT COURTYARD REHAB & HEALTH CENTER

 6:07  
73°



**COUNCIL VOLUNTEERS PACK 500 BOXES WITH FOOD AND HOUSEHOLD ESSENTIALS**

**HEADLINES**

# **Interactive /** An investigation to document every US healthcare worker who dies fighting Covid-19



**More than 900 US healthcare workers have died of Covid-19 - and the toll is rising**



**Dying young: the healthcare workers in their 20s killed by Covid-19**



**THE  
TEXAS  
TRIBUNE**

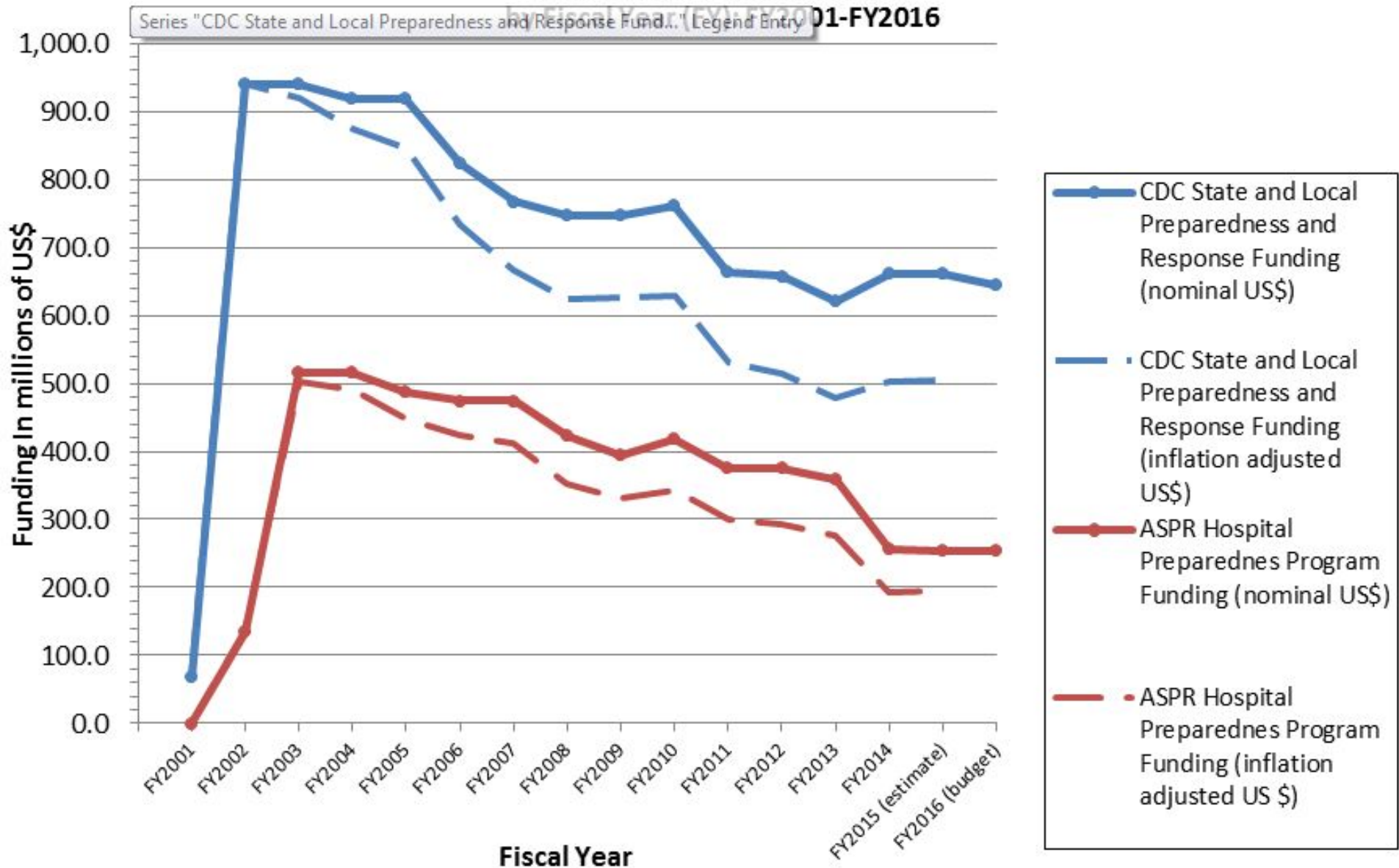
## CORONAVIRUS IN TEXAS

### **How years of underfunding public health left Texas ill prepared for the pandemic**

Budget cuts meant skimpier caches of protective equipment, and Texas' chronic shortage of public health workers has made the response more difficult, experts said.

BY EDGAR WALTERS SEPT. 17, 2020 5 AM

# **CDC State and Local Preparedness and Response and ASPR Hospital Preparedness Program Funding with Adjustment for Inflation**



# twitter



KEZI 9 NEWS

@KEZT9

The official KEZI 9 News twitter page  
serving Western Oregon with 24/7  
nonstop news coverage. Live. Local. Breaking.

Eugene, OR, USA

kezi.com

Joined February 2009



**Governor Kate Brown**

@OregonGovBrown

**New York needs more ventilators, and we are answering their call for help. We'll be sending 140 ventilators to help NY because Oregon is in a better position right now. We must do all that we can to help those on the front lines.**



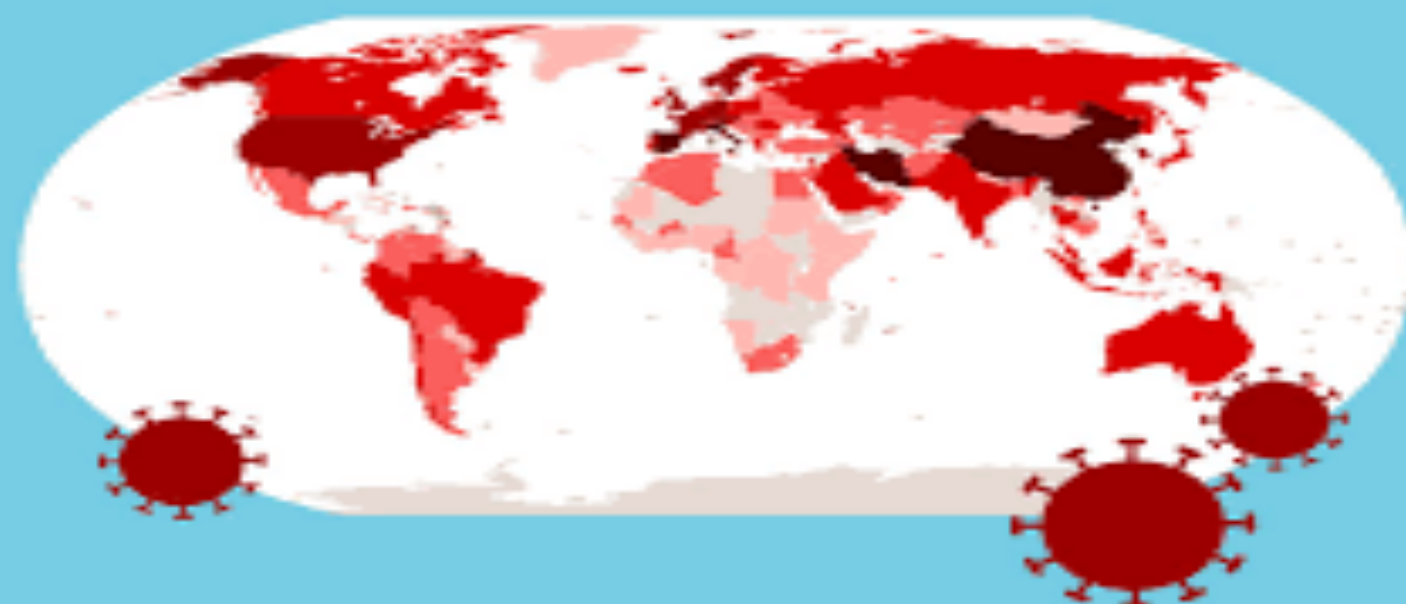
KEZI.COM

47° 6:04

LOCAL. LATE BREAKING. LIVE. LOCAL. LATE BREAKING.  
LATE BREAKING. LIVE. LOCAL. LATE BREAKING.



# DATA IN THE TIME OF COVID-19



# **Oregon among states to independently review COVID-19 vaccine from feds; experts raise red flags**

Updated 9:17: Oregonian 10/7



Audrey Kuehl, a study coordinator at the Clinical Research Institute of Southern Oregon, holds a dosage of the vaccine used for a clinical trial. (Jim Craven for KHN)

# **BEHAVIOR MATTERS**





**IN THE PAST WEEK HAVE YOU WORN A FACE MASK  
OR FACE COVERING WHEN YOU'VE LEFT YOUR  
HOME, OR NOT?**

---

**AMONG DEMOCRATS:**

**YES | 69%**

**NO | 31%**

**AMONG REPUBLICANS:**

**YES | 47%**

**NO | 53%**

AMONG THOSE WHO HAVE LEFT HOME IN THE PAST WEEK

**Are people losing faith in  
the ability of science to  
provide answers?**

(Reuters)

# Social Distance

# PLACE MATTERS



# **A CRISIS IS A TERRIBLE THING TO WASTE**

**ATTRIBUTAL BE TO MANY**

# The Future

NEXT EXIT 